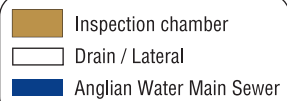
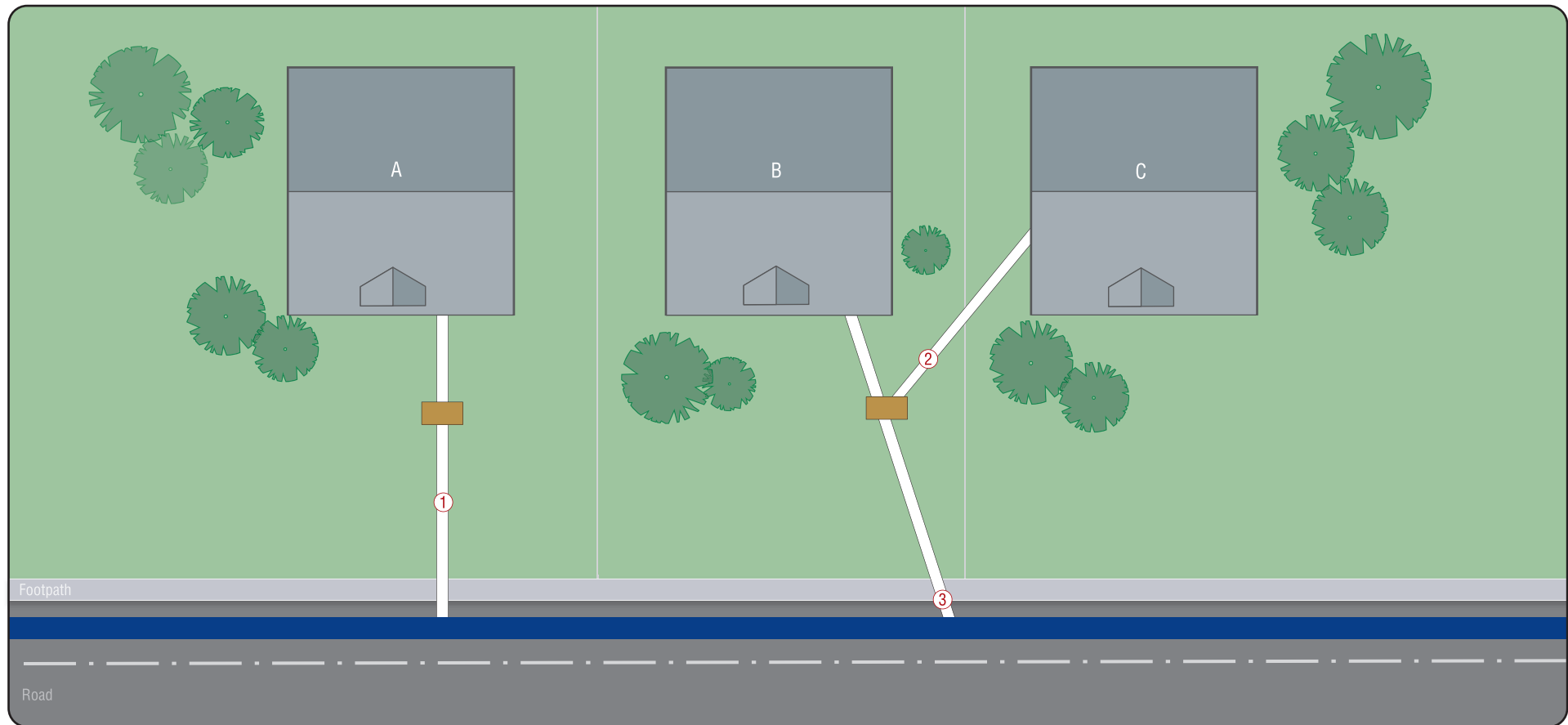


## Drainage Responsibilities



- Blockage at **point 1** is the responsibility of property **A**
- Blockage at **point 2** is the responsibility of property **C**
- Blockage at **point 3** is the responsibility of properties **B & C**
- Customers are responsible for the drain / sewer up to the point it connects to the Anglian Water main sewer, even if this is outside the property boundary.